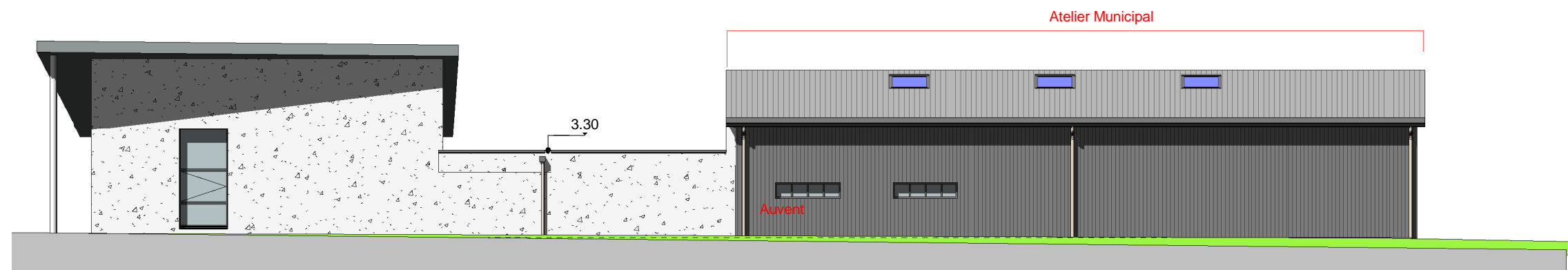
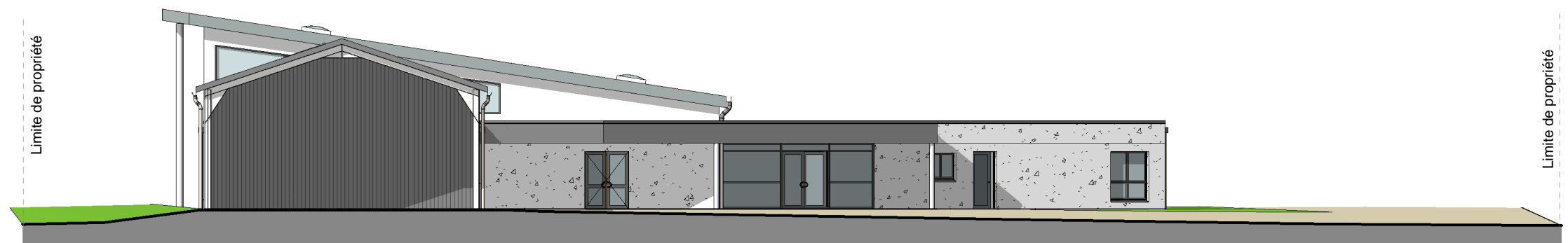


2-FACADE NORD
1 : 200



2-FACADE OUEST
1 : 200



2-FACADE SUD
1 : 200

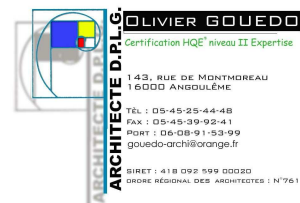
Projet:

CONSTRUCTION D'UN ATELIER
MUNICIPAL
AUSSAC VADALLE

Maître d'ouvrage:

MAIRIE AUSSAC VADALLE

Maître d'oeuvre-Architecte:



Signature et tampon de l'architecte:

DCE

ESQ	DCE
APD	EXE
DPC	DOE

ELEVATIONS

Echelle: 1 : 200

Date: 22/01/2013 15:05:04

Repère: 2-DCE05